

## Middletown Centre for Autism

The Centre's Vision is  
*'to enhance the lives of children and young people with autism and their families, through the delivery of specialist educational services.'*



### Learning Support & Assessment Service

#### Child Protection *Who to contact?*

If you have a safeguarding concern in relation to a child or young person in receipt of Learning Support and Assessment Services in school, speak directly to the Designated Teacher in the school which the child or young person attends.

If you have a safeguarding concern in relation to a child or young person in receipt of Learning Support and Assessment Services out of school, speak directly to Lorraine Scott, Designated Teacher or Helen Forde Deputy Designated Teacher in Middletown Centre for Autism Tel: 028 37 515750

**Social Services Gateway can be contacted on:**  
0800 78 37745

**Information on Gateway can be found on:**  
[www.nidirect.gov.uk/sites/default/files/publications/gatewayserviceteamcontactdetails.pdf](http://www.nidirect.gov.uk/sites/default/files/publications/gatewayserviceteamcontactdetails.pdf)



#### Middletown Centre for Autism

35, Church Street, Middletown, Co. Armagh

Tel: 028 37 515750

Email: [admin@middletownautism.com](mailto:admin@middletownautism.com)



### Learning Support & Assessment Service

### Safeguarding Children and Young People

### Information for Parents

### Northern Ireland



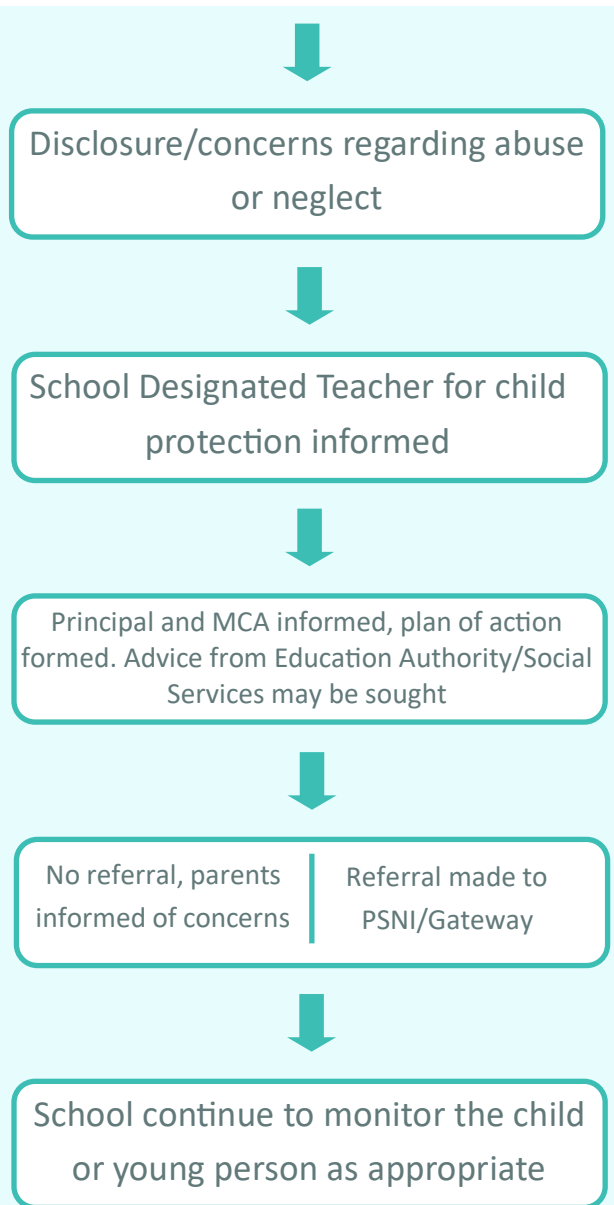
CENTRE FOR AUTISM  
MIDDLETOWN

## Parental Awareness of Child and Young Person Protection

Middletown Centre for Autism gives highest priority to the safety and welfare of children and young people who access our Learning Support and Assessment Service.

In all contact with children and young people staff in Middletown Centre for Autism follow the guidelines and procedures described in the Department of Education Northern Ireland (DENI) publication 'Safeguarding and Protection in Schools - 2019'

### Incidents which occur at school



### Incidents which occur in 'out of school' contexts

