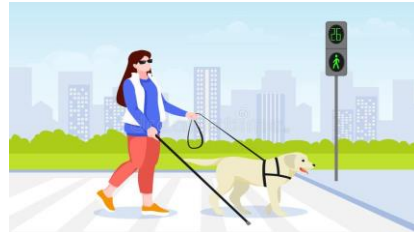


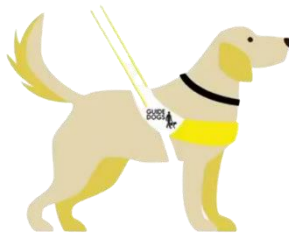
Guide Dogs



Guide dogs help people who are blind or partially sighted.



Guide dogs are trained to help people cross the road, get the bus and live independently.



Guide dogs wear a special harness to show that they are working.



Guide dogs are allowed in places where other dogs are not allowed - like shops and cafes.



It is dangerous to distract a working guide dog.



I must not touch, feed or talk to a guide dog without the owner's permission.