

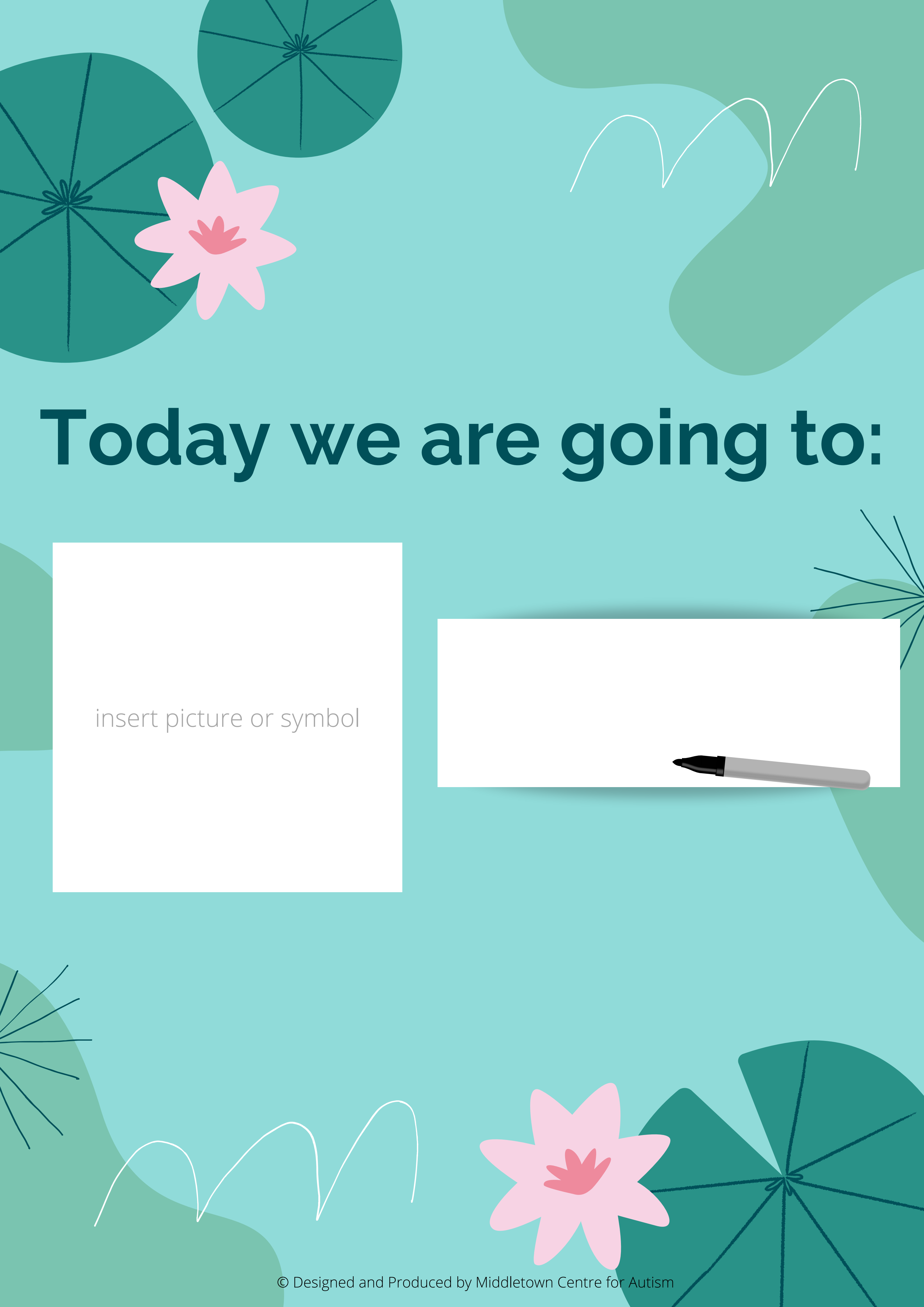


CENTRE FOR AUTISM
MIDDLETOWN

My Going Out Book

This belongs¹ to:





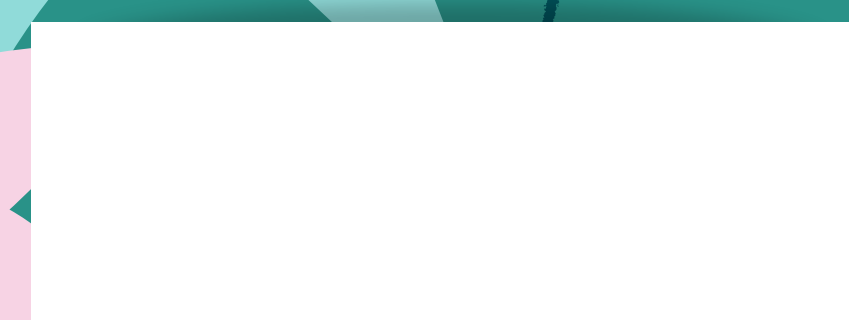
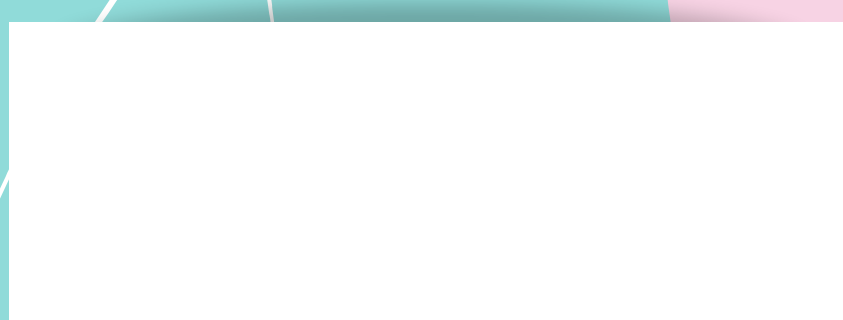
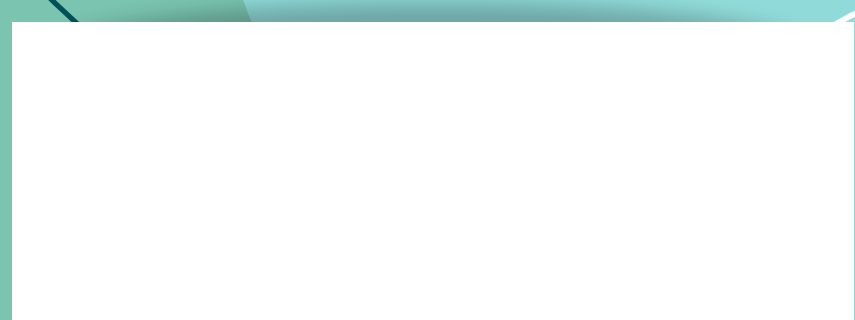
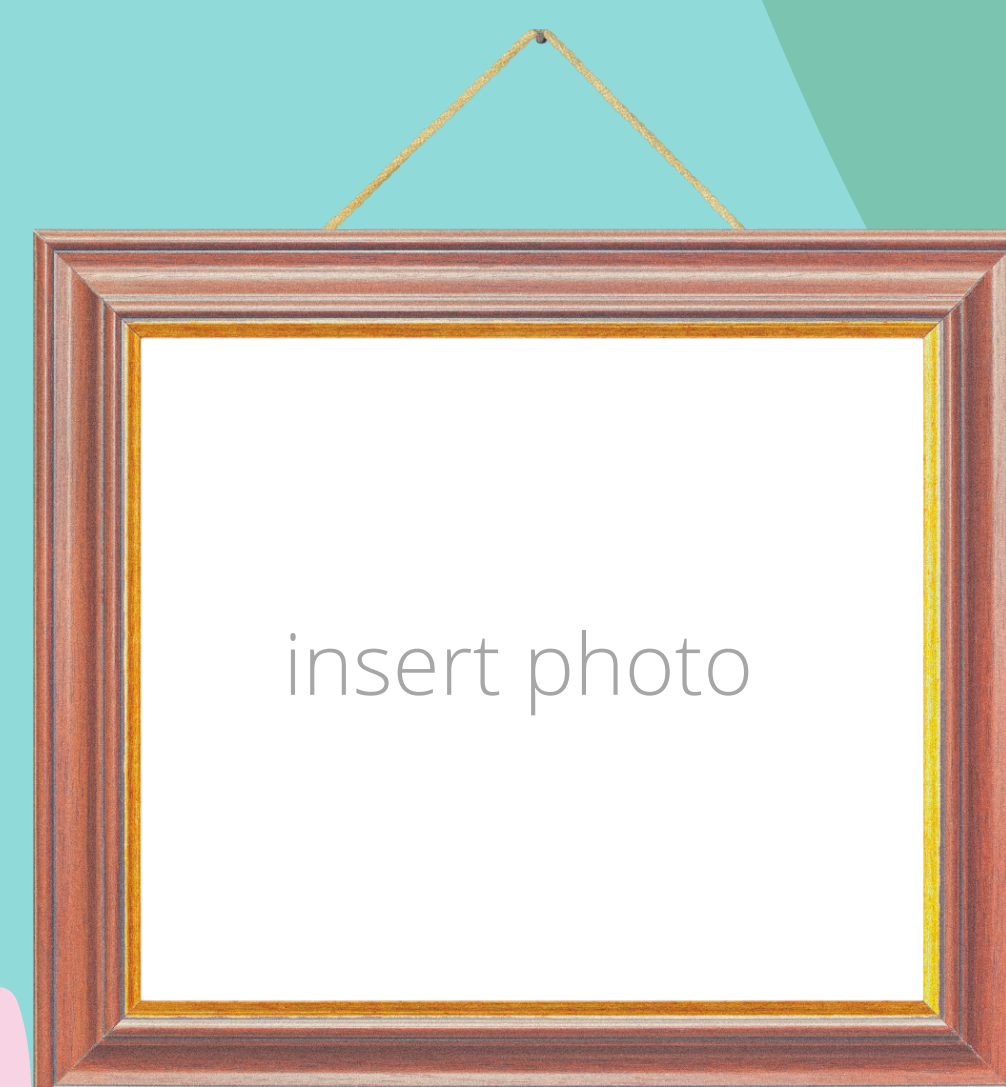
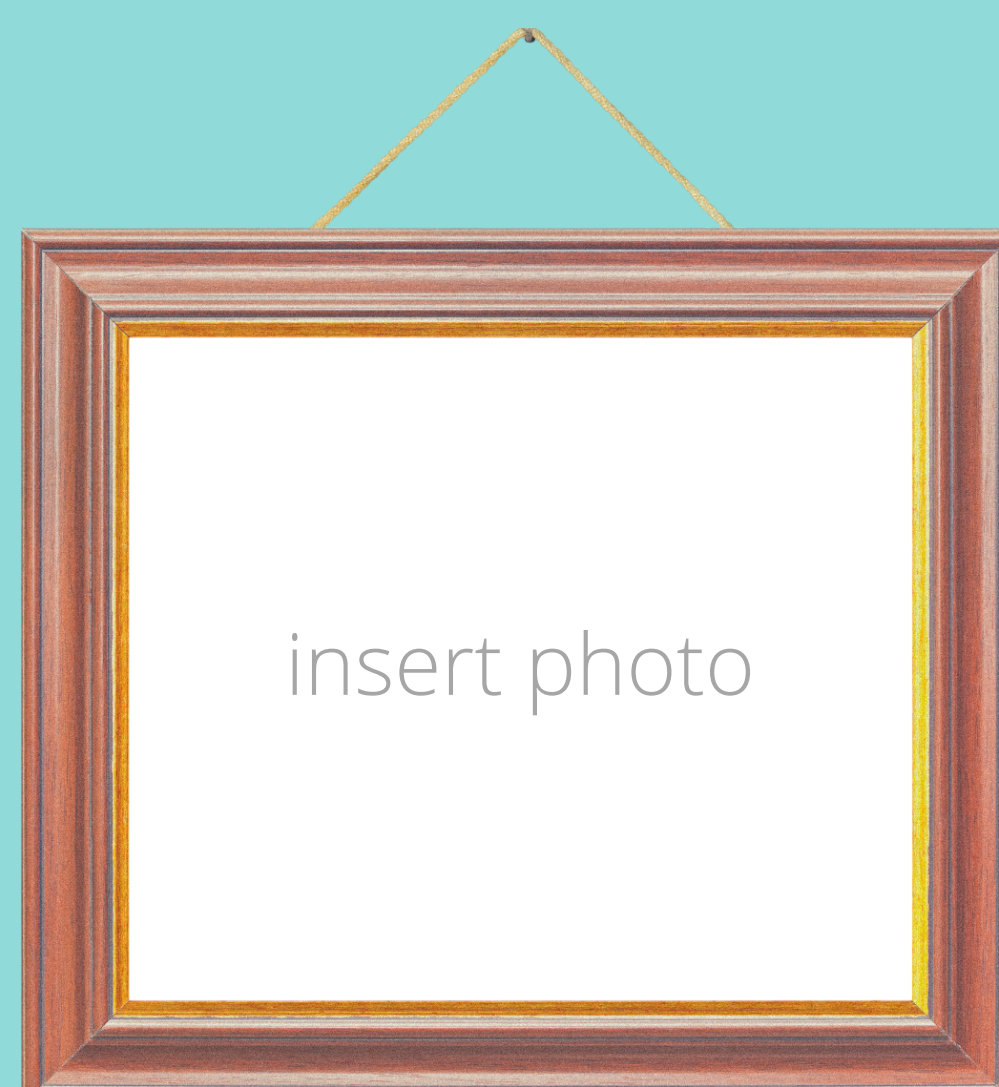
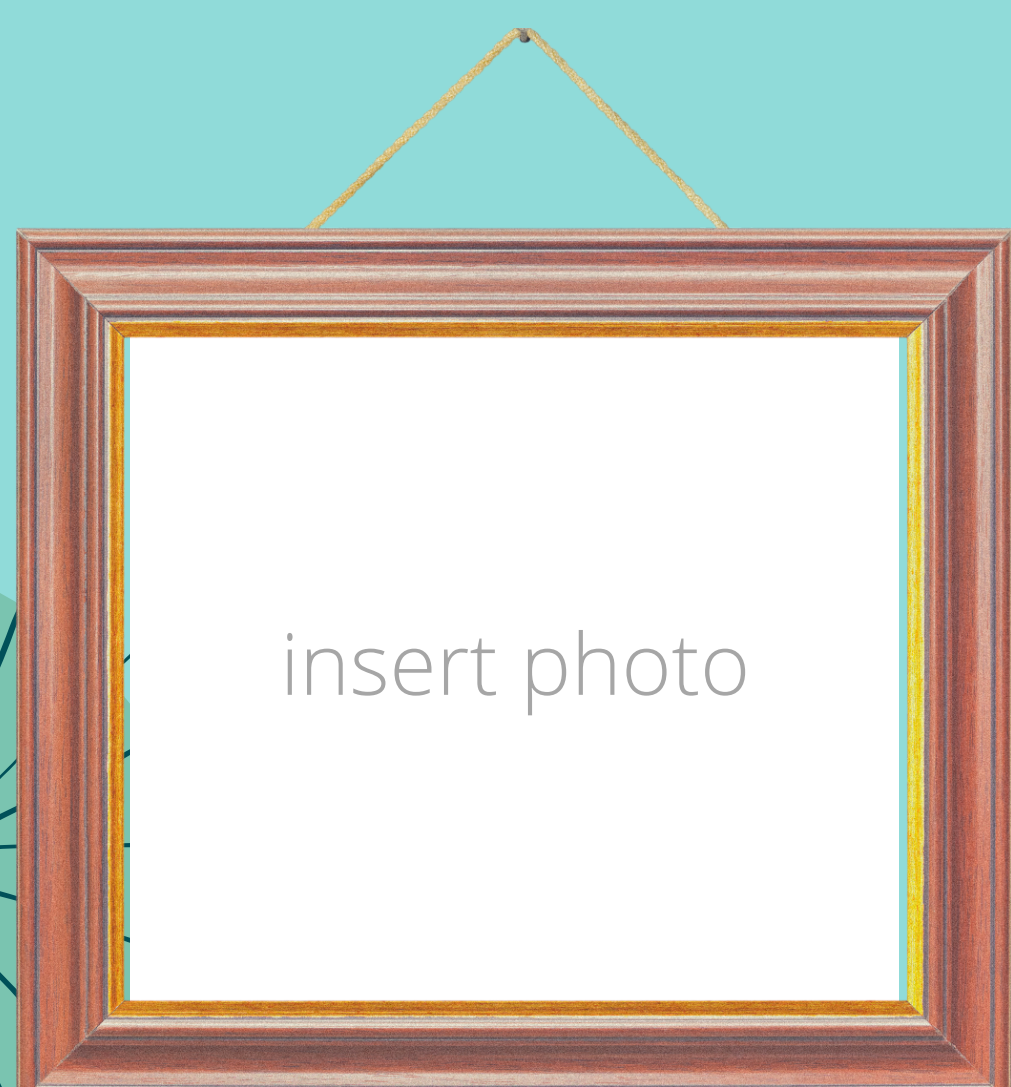
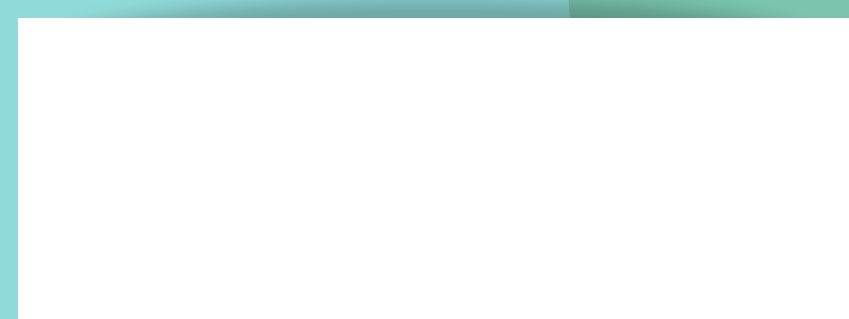
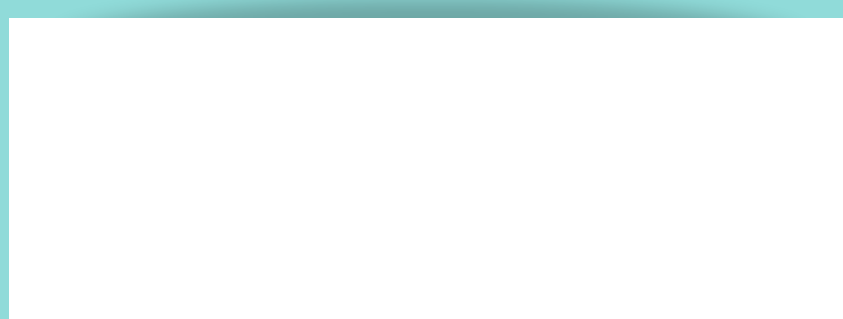
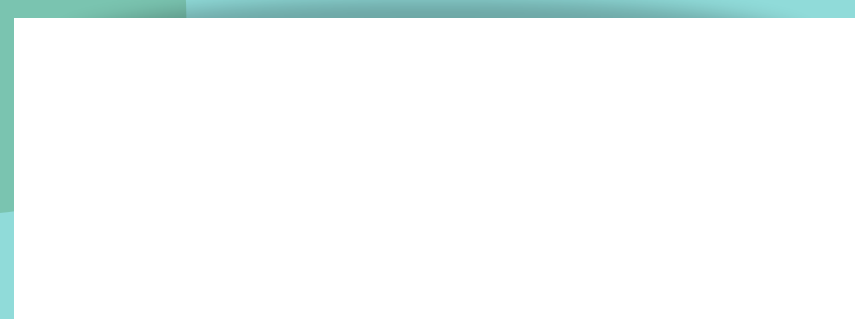
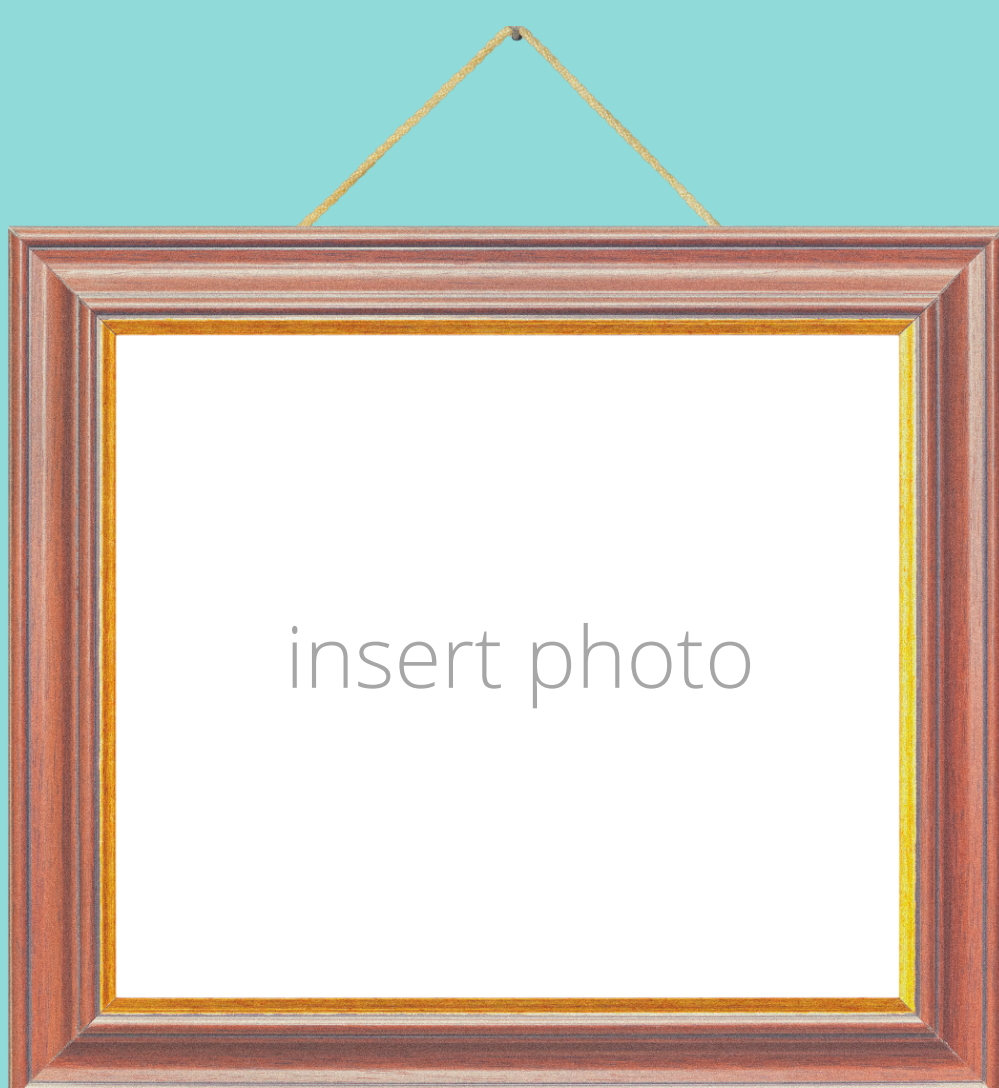
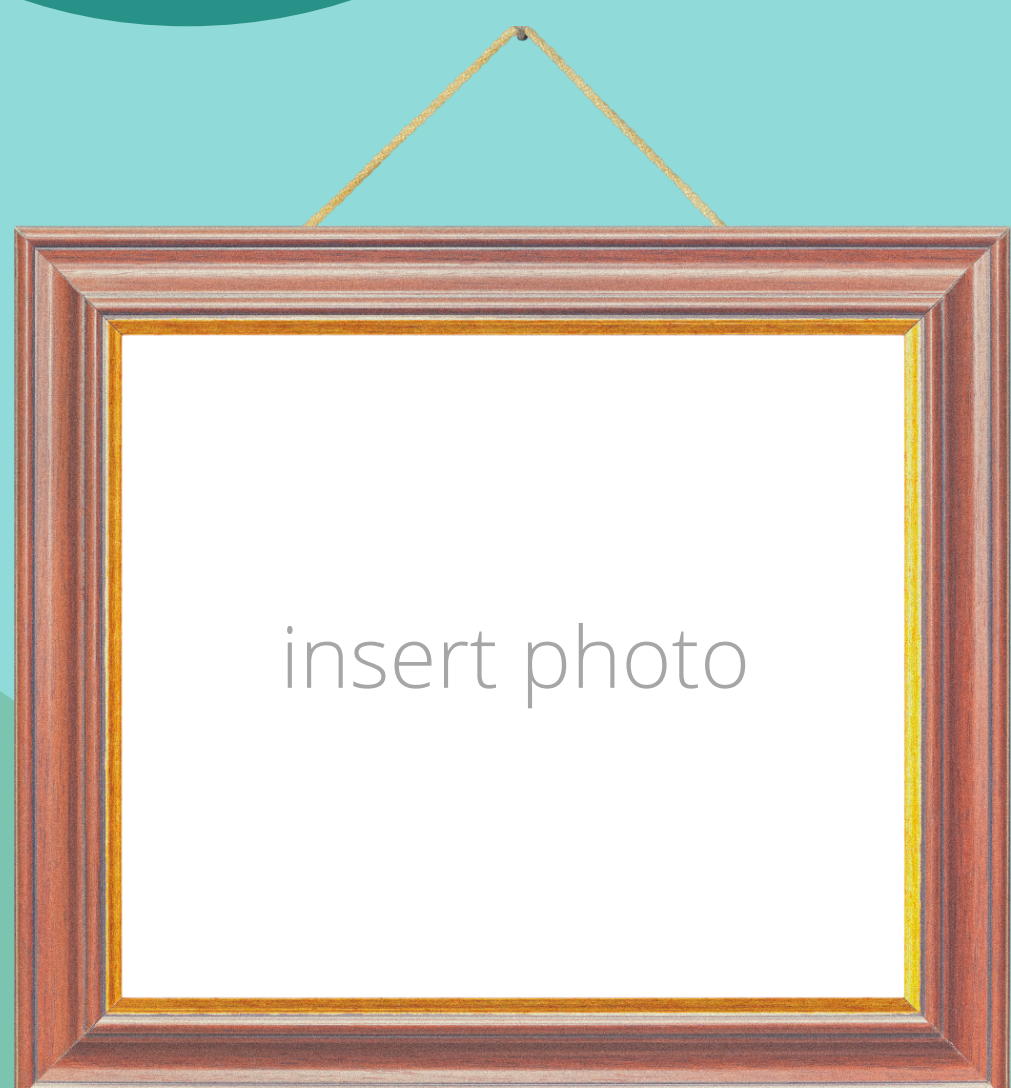
Today we are going to:

insert picture or symbol

A white rectangular box with a grey marker lying horizontally at the bottom right corner.



Who is going?





We need to bring:

Checklist:



1.



2.



3.



4.



5.



6.



7.



8.



9.



10.



insert picture
or symbol

insert picture
or symbol

insert picture
or symbol

insert picture
or symbol

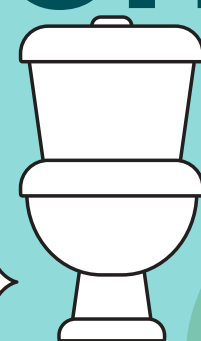
insert picture
or symbol

insert picture
or symbol

insert picture
or symbol

insert picture
or symbol

Has everyone been to the toilet?



Name:



1.

☐

2.

☐

3.

☐

4.

☐

5.

☐

6.

☐

7.

☐

8.

☐

9.

☐

10.

☐

insert photo

insert photo

insert photo

insert photo

insert photo

insert photo

insert photo

insert photo

Has everyone got their stuff?

Name:



1.

☐

2.

☐

3.

☐

4.

☐

5.

☐

6.

☐

7.

☐

8.

☐

9.

☐

10.

☐

insert photo

insert photo

insert photo

insert photo

insert photo

insert photo

insert photo

insert photo

All set!

Let's go!

