

Middletown Centre for Autism

The Centre's Vision is
*'to enhance the lives of children
and young people with autism,
and their families, through the delivery
of specialist educational services.'*



Learning Support & Assessment Service

Safeguarding Vulnerable Adults *Who to contact?*

If you have a safeguarding concern in relation to a vulnerable adult in receipt of Learning Support and Assessment Services in your educational setting, speak directly to the Designated Appointee in the setting which the vulnerable adult attends.

If you have a safeguarding concern in relation to a vulnerable adult in receipt of Learning Support and Assessment Services out of school, speak directly to Jill McCanney, Designated Teacher or Helen Forde, Deputy Designated Teacher at the Middletown Centre for Autism Tel: 028 37 515750

**Social Services Gateway can be contacted on:
0800 78 37745**

Information on Gateway can be found on:
[www.nidirect.gov.uk/sites/default/files/
publications/gatewayserviceteamcontactdetails.pdf](http://www.nidirect.gov.uk/sites/default/files/publications/gatewayserviceteamcontactdetails.pdf)



Middletown Centre for Autism
35 Church Street, Middletown, Co. Armagh
Tel: 028 37 515750
Email: admin@middletownautism.com



Learning Support & Assessment Service

Safeguarding Vulnerable Adults

**Information for Parents and
Service Users in Northern Ireland.**



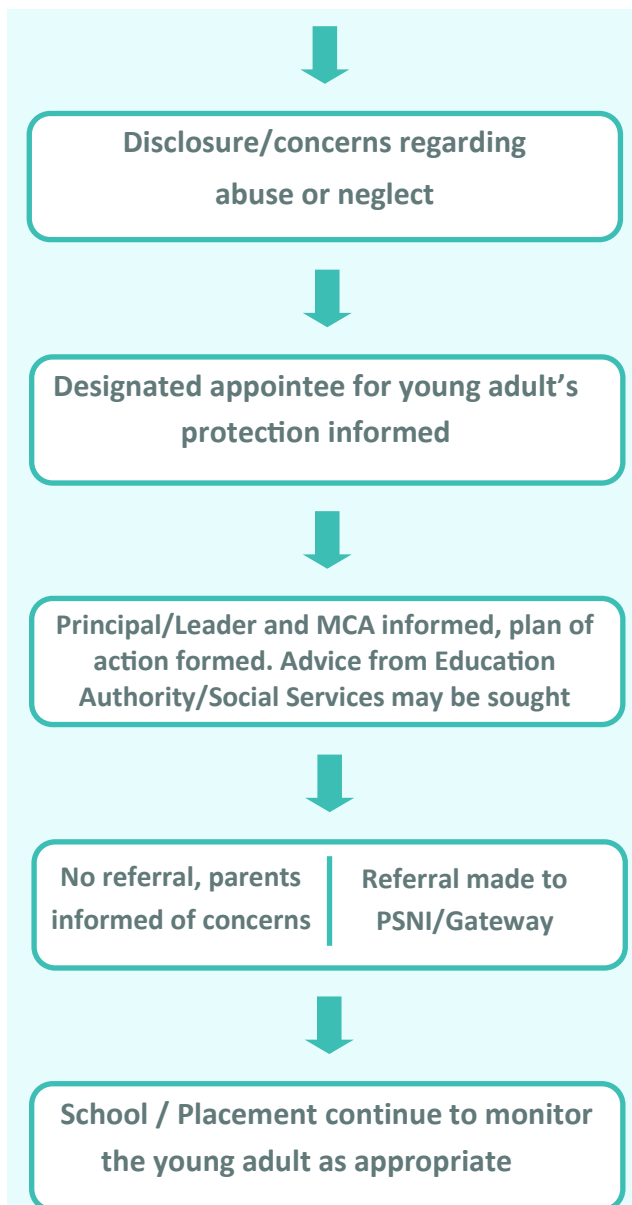
CENTRE FOR AUTISM
MIDDLETOWN

Parental Awareness of Safeguarding Vulnerable Adults.

Middletown Centre for Autism gives highest priority to the safety and welfare of vulnerable adults who access our Learning Support and Assessment Service.

In all contact with vulnerable adults Middletown Centre for Autism follow the guidelines and procedures described in the Department of Education Northern Ireland (DENI) publication 'Safeguarding and Protection in Schools - 2019'.

Incidents which occur in a school / placement context



Incidents which occur in an 'out of educational' setting context

